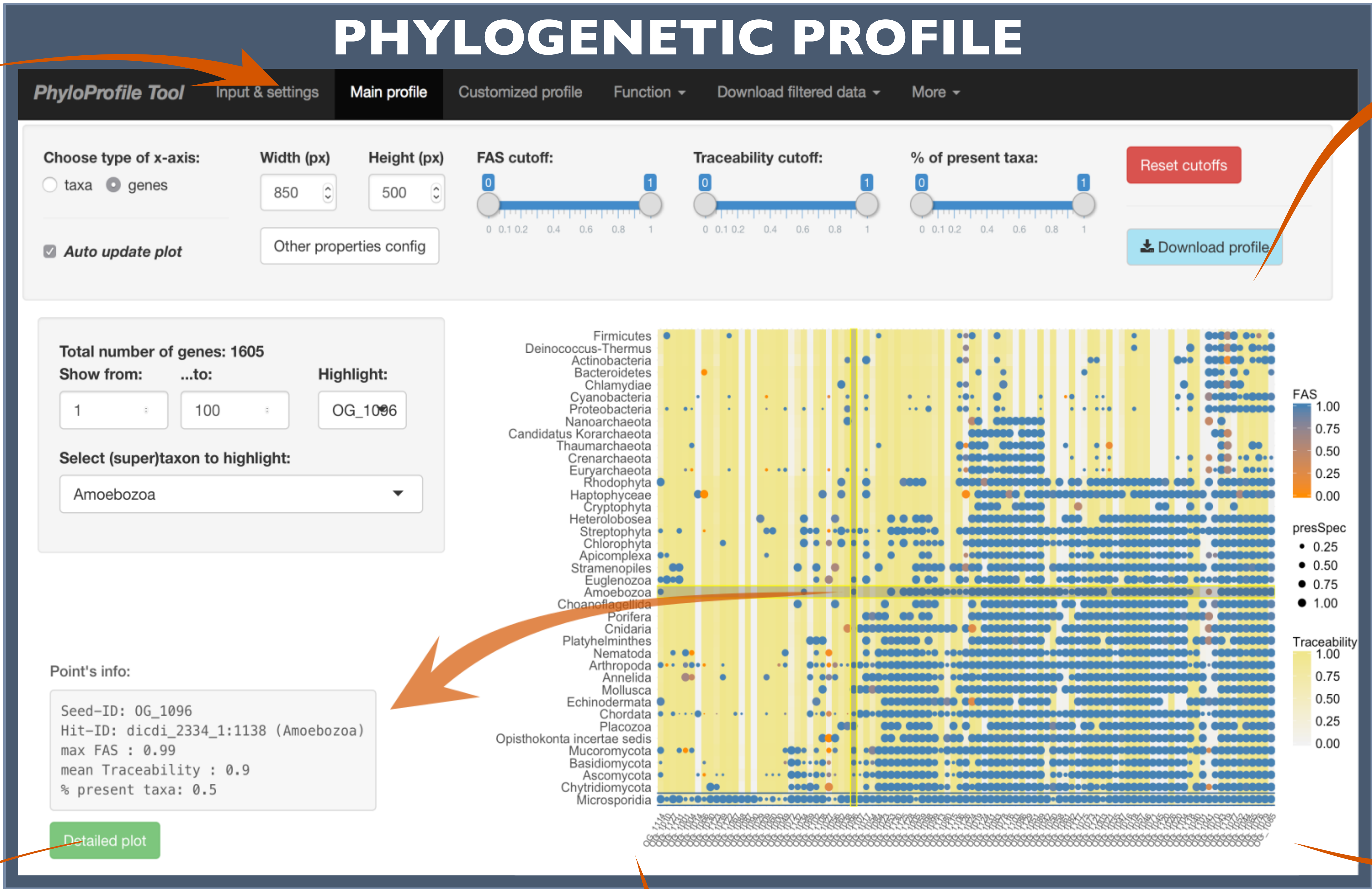
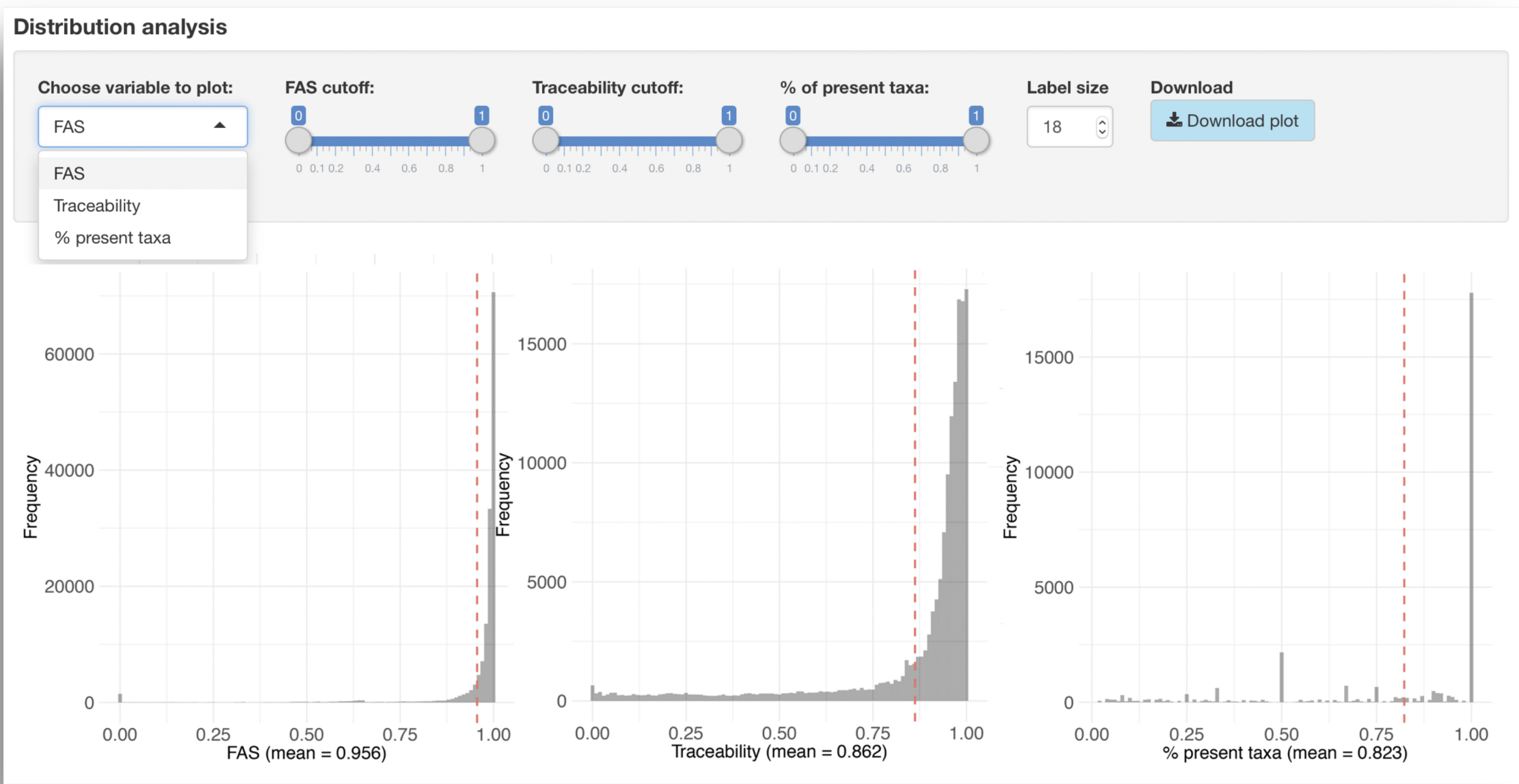


INPUT & INITIAL SETTING

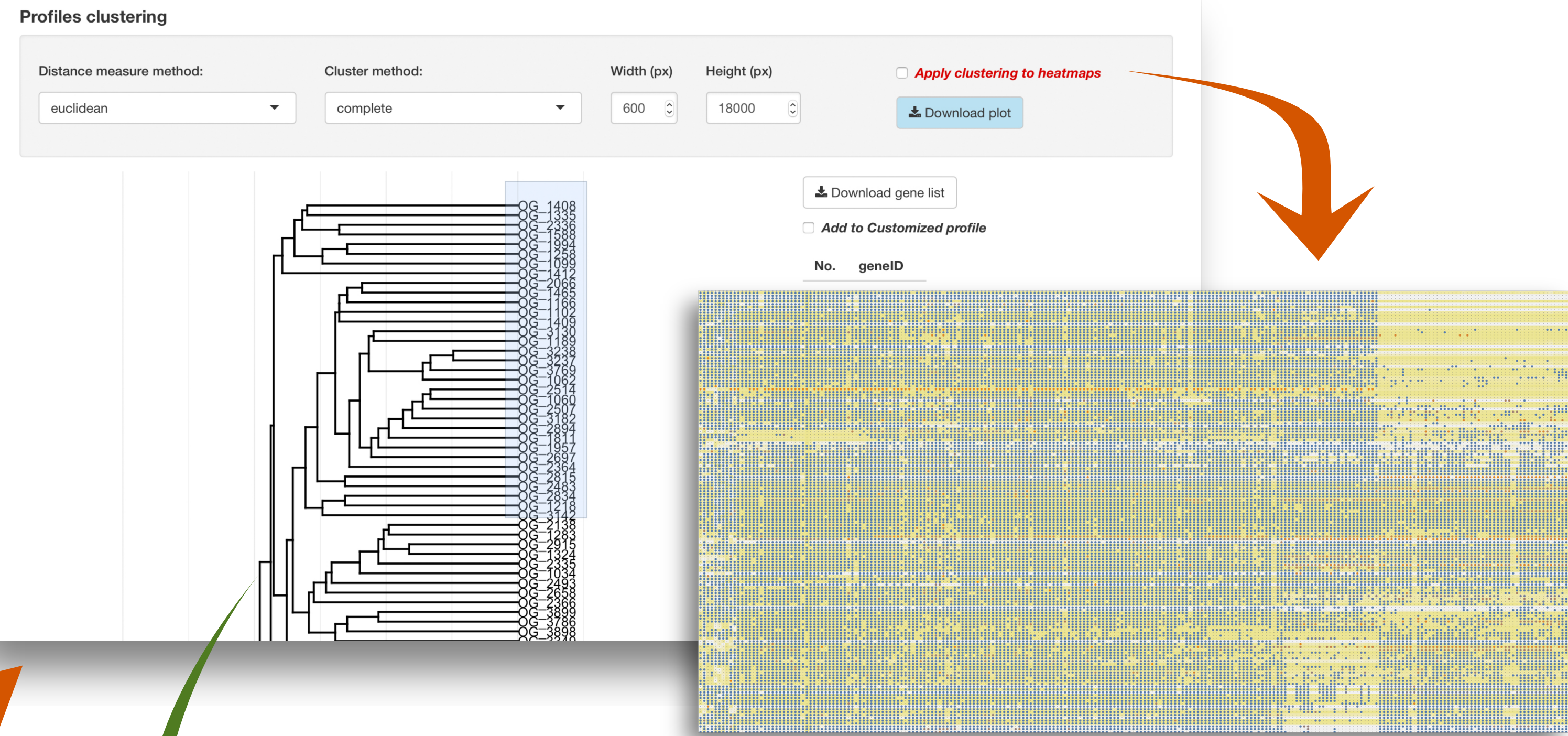
- **Phylogenetic profile:** Multi-FASTA, OrthoXML or tab-delimited format, optionally integrated with two additional information layers such as domain structure similarity, taxonomy distance, etc.
- **Protein domain architectures** (optional): tab-delimited text.
- **Protein sequences** (optional): FASTA format.
- **Level of taxonomic resolution:** species, genus, family, etc.



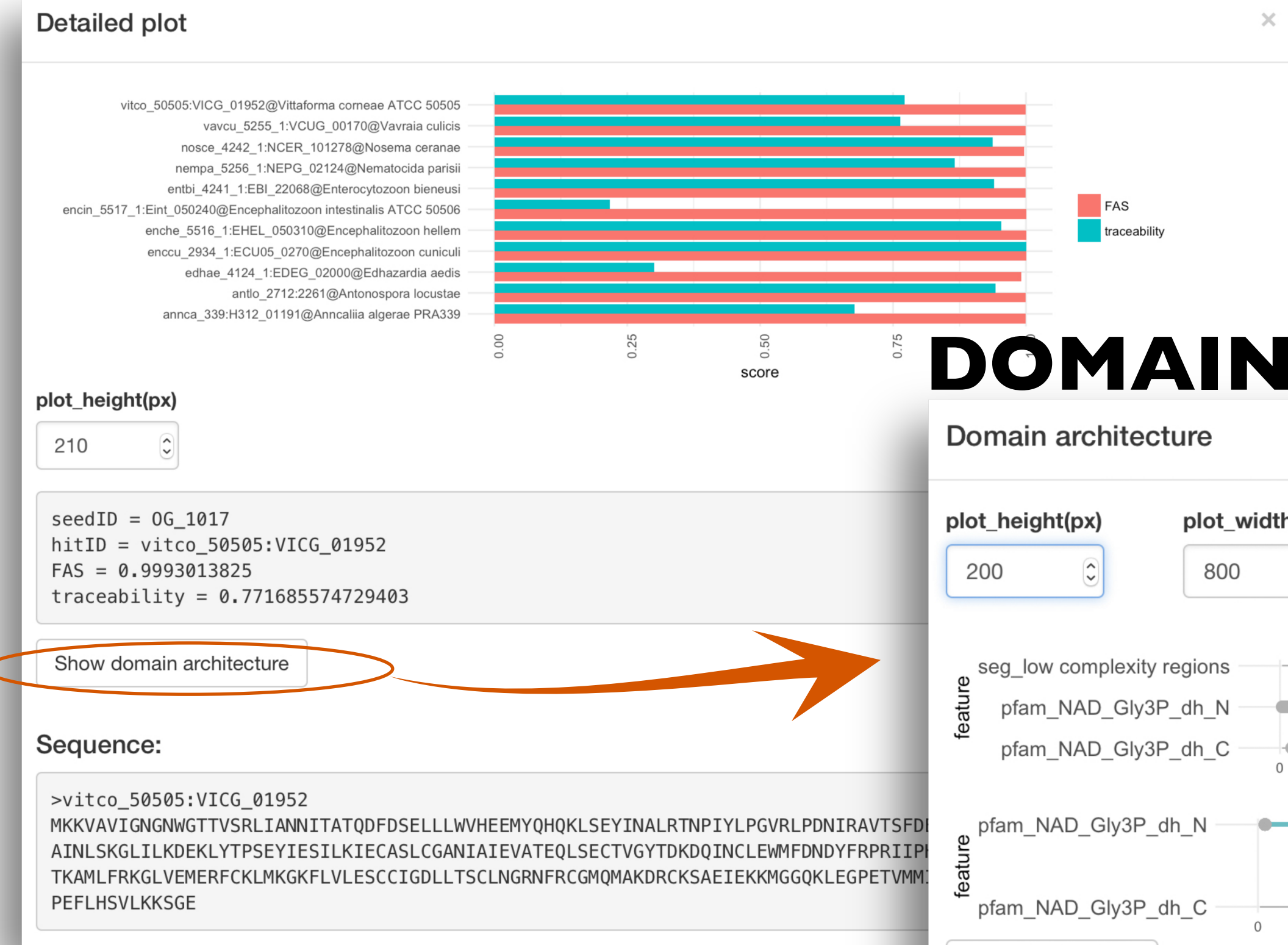
DISTRIBUTION ANALYSIS



PROFILE CLUSTERING



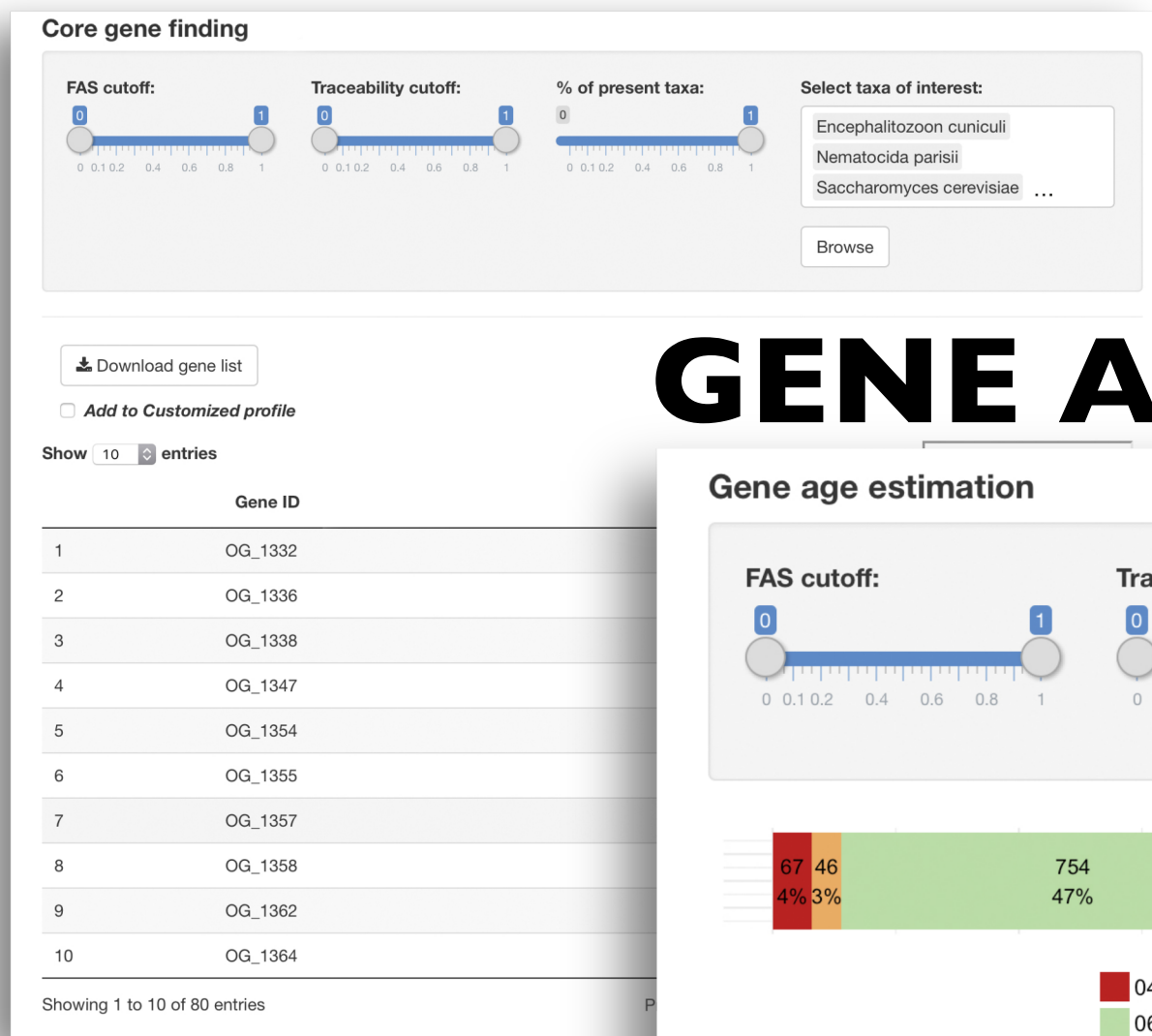
PAIRWISE PROTEIN COMPARISON



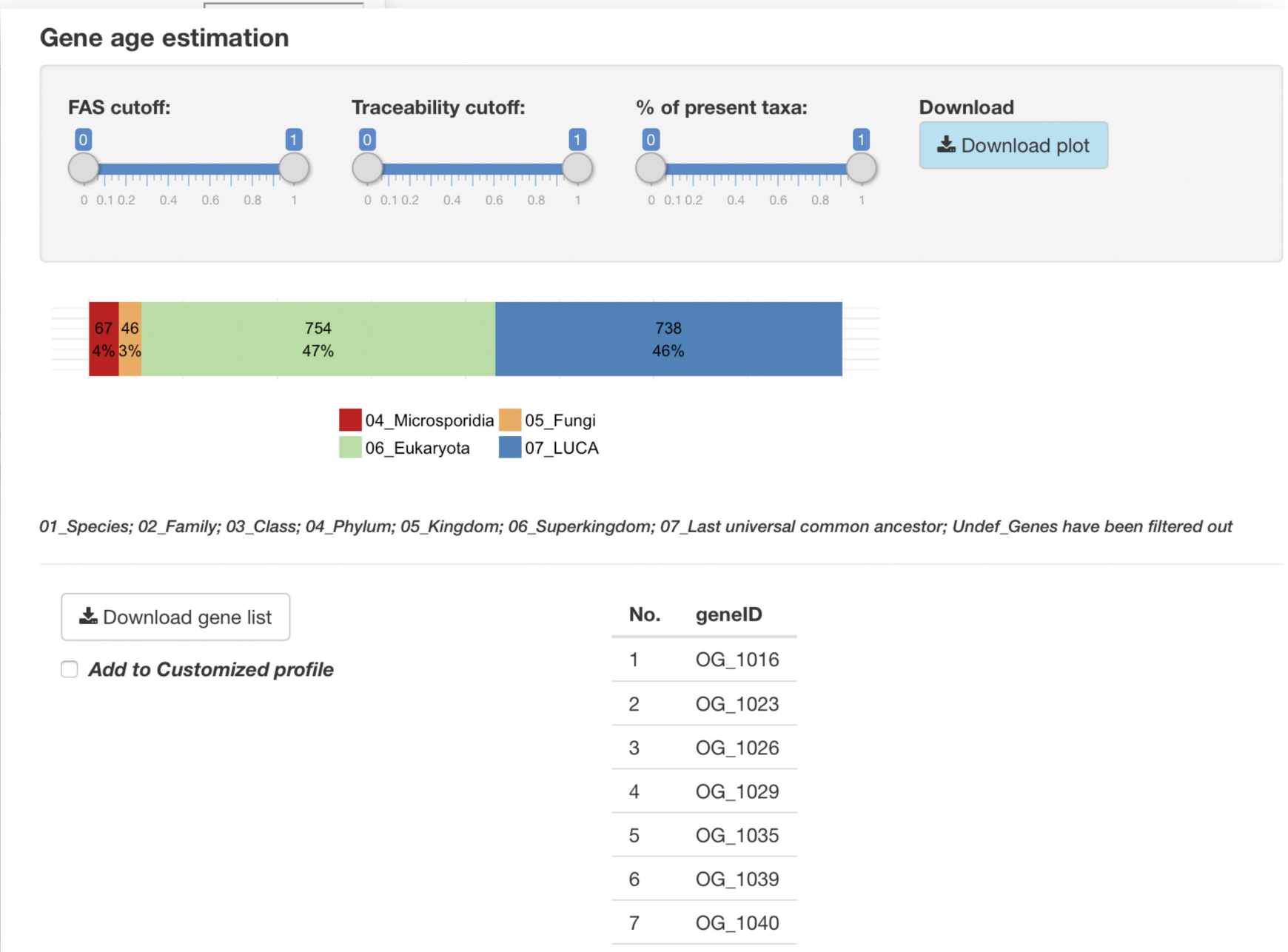
DOMAIN ARCHITECTURE COMPARISON



CORE GENE IDENTIFICATION



GENE AGE ESTIMATION



FILTERED DATA EXPORT

